

MSBS Baobab Tree



Oil Pattern Distance:	41 Feet	Reverse Brush Drop:	36 Feet	Oil Per Board:	45 uL
Forward Oil Total:	27.765 mL	Reverse Oil Total:	15.525 mL	Volume Oil Total:	43.29 mL
Forward Boards Crossed:	617 Boards	Reverse Boards Crossed:	345 Boards	Total Boards Crossed:	962 Boards

	Start	Stop	Loads	Speed	Crossed	Start	End	Feet	T.Oil
1	2L	2R	4	14	148	0.0	5.9	5.9	6660
2	2L	2R	3	14	111	5.9	11.8	5.9	4995
3	2L	2R	3	14	111	11.8	17.7	5.9	4995
4	5L	5R	2	14	62	17.7	21.6	3.9	2790
5	6L	6R	2	14	58	21.6	25.5	3.9	2610
6	7L	7R	2	14	54	25.5	29.4	3.9	2430
7	8L	8R	2	14	50	29.4	33.3	3.9	2250
8	9L	9R	1	14	23	33.3	35.2	1.9	1035
9	2L	2R	0	22	0	35.2	41.0	5.8	0

Navigation: Forward Reverse More

Conditioner:
Type In or Select One

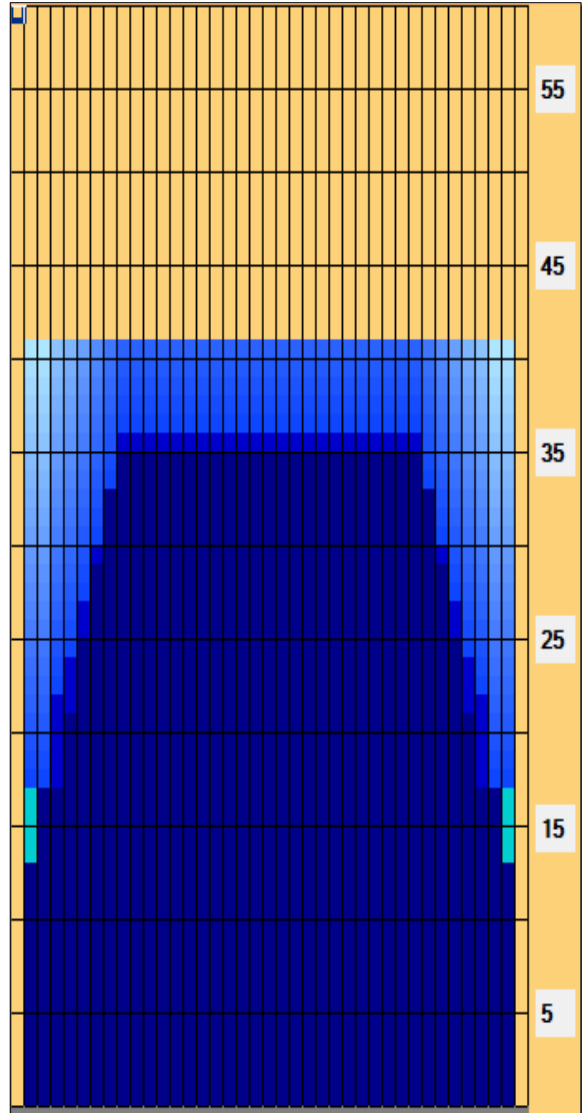
TransferType:
Type In or Select One

Forward

Reverse

Combined

Buff



	Start	Stop	Loads	Speed	Crossed	Start	End	Feet	T.Oil
1	2L	2R	0	30	0	41.0	36.0	-5.0	0
2	9L	9R	1	22	23	36.0	32.9	-3.1	1035
3	8L	8R	1	22	25	32.9	29.8	-3.1	1125
4	7L	7R	1	22	27	29.8	26.7	-3.1	1215
5	6L	6R	1	18	29	26.7	24.2	-2.5	1305
6	5L	5R	1	18	31	24.2	21.7	-2.5	1395
7	4L	4R	2	18	66	21.7	16.6	-5.1	2970
8	3L	3R	2	14	70	16.6	12.7	-3.9	3150
9	2L	2R	2	14	74	12.7	8.8	-3.9	3330
10	2L	2R	0	14	0	8.8	0.0	-8.8	0

Navigation: Forward Reverse More

Item Description	3L-7L:18L-18R Outside Track:Middle	8L-12L:18L-18R Middle Track:Middle	13L-17L:18L-18R Inside Track:Middle	18L-18R:17R-13R Middle: Inside Track	18L-18R:12R-8R Middle:Middle Track	18L-18R:7R-3R Middle:Outside Track
Track Zone Ratio	1.56	1.01	1	1	1.01	1.56

